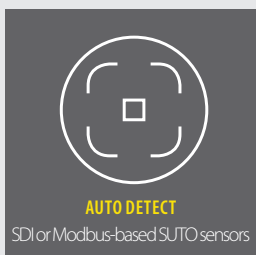


S551

Portable Data Logger



The ideal data logger for energy analysis (ISO 50001) and air audits (ISO 11011)



By connecting a LTE/4G modem to the designated USB port, S551 can be monitored remotely through S4A software

S551 FEATURES



AUTO DETECT
SDI or Modbus-based SUTO sensors



TOUCH SCREEN
5" large color LCD



VERSATILE CONNECTION
Up to 24 sensors inputs



TIGHT PROTECTION
IP65



WEB SERVER
Access from world wide



BACK-UP POWER
Battery as back-up power

Easy to use

- Just connect the sensor and start the recording, no configuration and programming required
- Easy operation through color-touch display
- Integrated web server for remote monitoring

Flexible

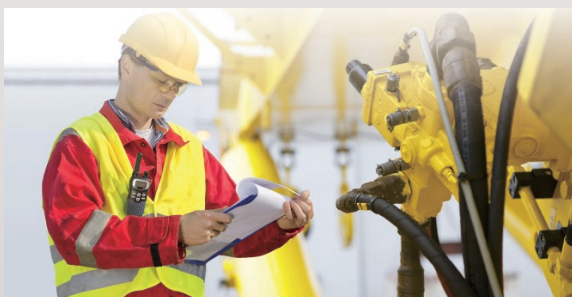
- Connectable sensors for all required measurement tasks (air flow, air consumption, power consumption, pressure, temperature and many more)
- Up to 24 inputs through extension boxes and Modbus
- Third party sensors can be easily connected

Efficient

- S551 logs data on site
- Remotely check the measurements and read out the logger files with wireless 4G and S4A software (optional)
- Cost effective solution
- Full software package includes:
 - S4A for data export and simple analysis (free of charge)
 - CAA for compressed air analysis and audits (included with S551)

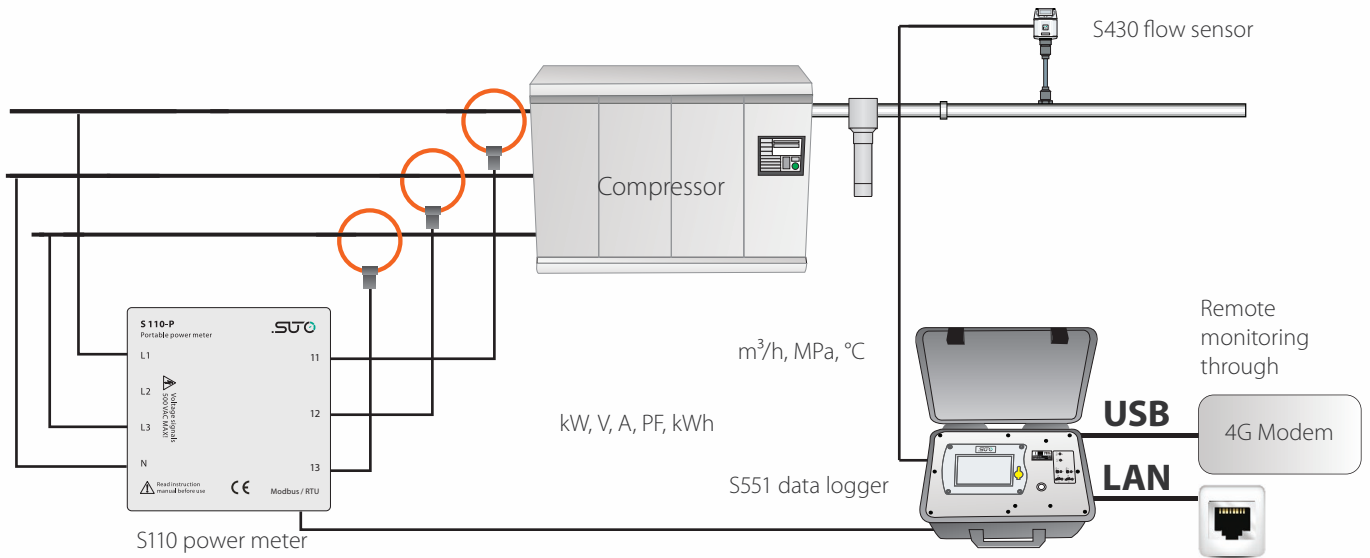
Safe

- Power glitches and cuts won't affect performance: battery backup power



S551 APPLICATION

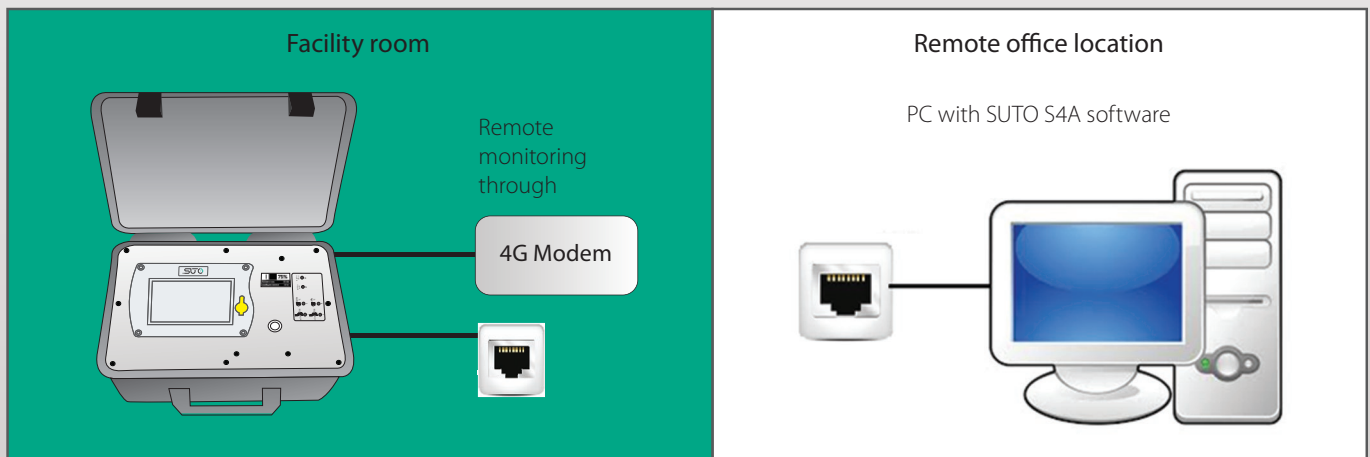
Measurement setup for data logging on the supply side



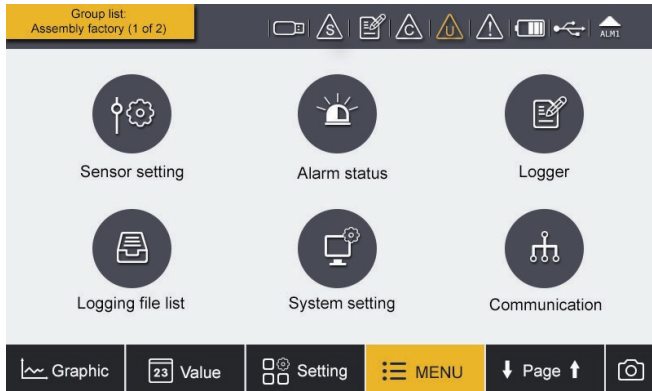
S551 CONNECTIONS

			<p>Portable Modbus splitter box</p> <p>Battery gauge indicating remaining battery power and life time</p>
<p>Ethernet port</p>	<p>Sensor connection through 5 poles locking connectors and mains connector</p>	<p>75%</p> <p>Remain to use: 30 min</p> <p>Loading to connect: 3.5 w</p>	

The S551 is capable of sending measurement data and status information to a remote server through the internet. This allows users to monitor the system remotely. The illustration below shows the principle setup.

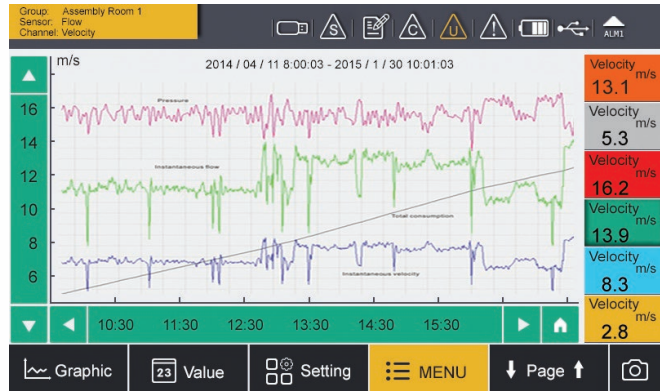


S551 TOUCH SCREEN OPERATION



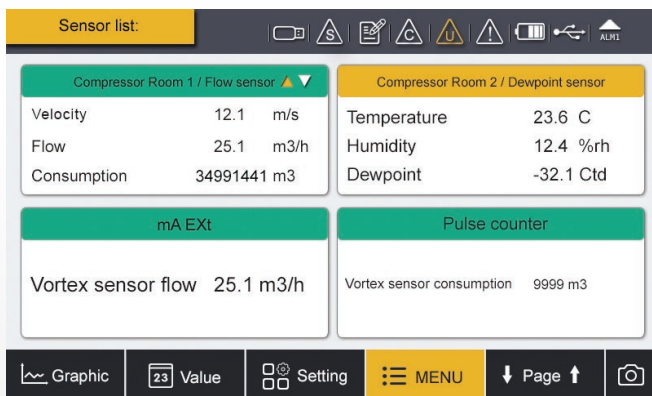
The S551 comes with a high resolution 5" colour touch screen interface making the operation as simple as possible.

SUTO intelligent sensors are detected automatically on power-up. With a few settings the data logger is ready for operations with virtually unlimited memory size.



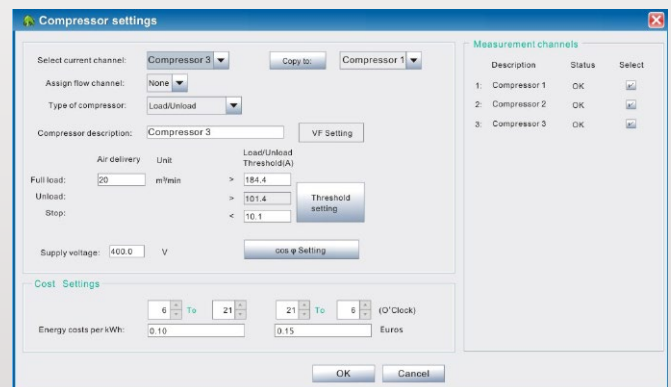
Select which channels you want to view or analyze and the built in graphic analyzer will help you identify problems immediately.

For detailed analysis we recommend using SUTO software S4A, CAA or S4M.



Up to 4 sensors can be viewed on one page and through page scrolling further sensors can be displayed.

S551 DATA ANALYSIS WITH THE COMPRESSED AIR ANALYZER










Through SUTO software S4A recordings are downloaded to the PC via USB or Ethernet port. The basic analysis can be done in S4A.

For more sophisticated compressor analysis the SUTO CAA software offers many advanced features such as: performance statistics of compressors (efficiency, air delivery, load/unload cycles), leakage analysis, report generation and more. Comparisons with base line measurements from last year or last month help to identify system changes.

S551 ORDERING





Please use the following table to assist in placing your order with our sales staff.

	Data logger	
	P560 5100	S551-P4, portable data recorder, 4 digital input channels, power cord, USB cable, S4A software, CAA software
	P560 5101	S551-P6, portable data recorder, 4 digital input channels and 2 analog, power cord, USB cable, S4A software, CAA software
	A1670	USB 4G dongle for S551/S600, including S4A software
	Flow sensors	
	S601 0401	S401, 300 mm Shaft, insertion type flow sensor, max measuring range, DN15 ... DN300, Modbus/RTU, including 5 m cable with connector to S551
	S601 0430	S430, 220 mm Shaft, insertion type Pitot tube flow sensor for wet air, DN25 ... DN250, Modbus/RTU, including 5 m cable with connector to S551
	Dew point sensor	
	S601 0215	S215 dew point sensor, -20 ... +50 °C Td, Measuring chamber with quick coupling, 5 m cable with connector to S551
	S601 0211	S211 dew point sensor, -60 ... +20 °C Td, Measuring chamber with quick coupling, 5 m cable with connector to S551
	S601 0220	S220 dew point sensor, -100 ... +20 °C Td, Measuring chamber with quick coupling, 5 m cable with connector to S551
	Pressure sensors	
	S694 1886	Pressure sensor, 0 ... 1.6 MPa(g), 4 ... 20 mA including a 5 m cable with connector to S551 (works only on S551-P6)
	S694 0356	Pressure sensor, 0 ... 4.0 MPa(g), 4 ... 20 mA including a 5 m cable with connector to S551 (works only on S551-P6)
	S694 1887	Pressure sensor, 0 ... 1.6 MPa(g), Modbus/RTU including a 5 m cable with connector to S551 (works on S551-P4 & P6)
	S694 1888	Pressure sensor, 0 ... 4.0 MPa(g), Modbus/RTU including a 5 m cable with connector to S551 (works on S551-P4 & P6)
	Amp sensor	
	S554 0156	SUTO current sensor, 1000A, 100 mm diameter, including connector to S551
	S554 0157	SUTO current sensor, 3000A, 150 mm diameter, including connector to S551
	Temperature sensor	
	S693 0005	Temperature transmitter, -50 ... +200 °C, 4 ... 20 mA loop powered, 6 x 150 mm sensor tube, 5 m cable with connector
	A554 6003	Compression fitting, 6 mm, G 1/2" thread, 0.6 MPa
	A554 6004	Compression fitting, 6 mm, G 1/2" thread, 1.6 MPa
	Power meter (for 3 phase and single phase measurement)	
	P554 0134	Portable power meter S110-P, Modbus/RTU, including 4 test leads, 4 test clips, 5 m cable with connector to S551
	S554 0160	SUTO current sensor for S110-P, 1000 A, 100 mm diameter, 1.8 m cable, connector to S110-P
	S554 0161	SUTO current sensor for S110-P, 3000 A, 150 mm diameter, 1.8 m cable, connector to S110-P
	S554 0162	SUTO current sensor for S110-P, 100 A, 160 mm diameter, 1.8 m cable, connector to S110-P

Note: For 3 phases power supply 3 Rogowski coils are needed.

S551 ORDERING

Please use the following table to assist in placing your order with our sales staff.

	Other sensors / extensions	
	P554 0080	8 channel analog input extension, connectable to S551, including 5 m cable with connector, 2-wire sensors support only Note: we offer other two models which supports 3-wire inputs and combination of 2-wire and 3-wire. Please contact the sales.
	A554 3314	Portable Modbus splitter box, with M12 connector
	Accessories	
	A553 0103	Extension cable, 5 m, male-female connectors
	A553 0110	Open wires cable, 5 m cable with connector
	A553 0111	Sensor cable, M12, 5 m with connector to S551
	A554 0035	Transport case S551 for sensors and cables, L560 x W450 x H160 mm (internal compartment can be arranged according to your individual sensor requirements)
	A554 0036	Transport case, customized for 1 x S110-P, 3 Rogowski coils, 4 x test leads, 4 x test clips, 1 x S430

* Please contact us for further accessories and details.

大華高科股份有限公司
www.taiwah.com.tw info@taiwah.com.tw

台北
台中
台南

TEL: (02) 2592 - 5119
TEL: (04) 2707 - 2269
TEL: (06) 243 - 2338

Fax: (02) 2592- 3577
Fax: (04) 2707- 1799
Fax: (06) 243 - 2339