

Luxmeter LX 200



- **Instantaneous illuminance**

Displaying of instantaneous / maximum / minimum values.

- **Relative illuminance**

Allows a relative measurement to a reference point to quantify a light input or an illuminance decrease.

- **Evolution of illuminance according to weather conditions**

Storage of temporal evolution of illuminance for the follow up of environment conditions.

- **Cartography of illuminance – Spatial representation**

Coloured representation according levels obtained for printing of report (on a computer such as PC).

- **Uniformity**

Calculation of the min / ave ratio for determination of illuminance uniformity at workstation according to standards*.

- **As per following standards :**

NF EN 12464-1 – Lighting of workplaces (inside)

NF EN 12464-2 – Lighting of workplaces (outside)

NF EN 12193 – Lighting of sports facilities

- **Supplied with LLX200 software**

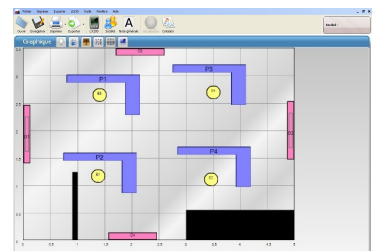
Operating software for data processing and printing of reports.



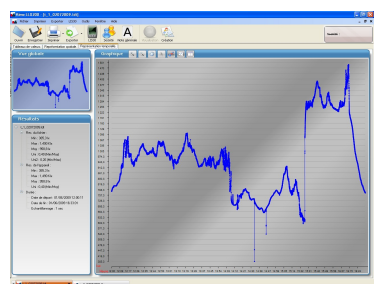
LX200 hand-held luxmeter, self-contained and automatic is specially designed to illuminance measurement. It allows storage of datasets for processing on a computer via the **LLX200** software.



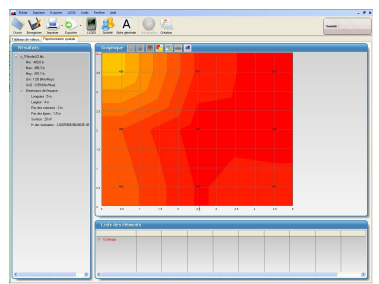
Determination of the illuminance uniformity of a local with graphic representation of workstations and luminaries



Following temporal evolution of illuminance of a workstation or a journey



Illuminance cartography with coloured nuance of a workstation (sports facilities)



ILLUMINANCE MEASURING RANGE

- ♦ from 0.0 to 200 000 Lux

| Display | Unit | Resolution | Accuracy* |
|----------------|------|------------|-------------------------------|
| 0.0 to 10.0 | lx | 0.1 | ± 2% of reading or ± 2 lux |
| 10.0 to 99.9 | lx | 0.1 | |
| 100.0 to 999.9 | lx | 0.1 | |
| 1000 to 9999 | lx | 1 | |
| 10.00 to 99.99 | klx | 0.01 | |
| 100.0 to 200.0 | klx | 0.1 | |

- ♦ from 0 to 18585 fc

| Display | Unit | Resolution | Accuracy* |
|----------------|------|------------|---------------------------------|
| 0.00 to 1.00 | fc | 0.01 | ± 2% of reading or ± 0.19 fc |
| 1.00 to 99.99 | fc | 0.01 | |
| 100.0 to 999.9 | fc | 0.1 | |
| 1000 to 9999 | fc | 1 | |
| 10.00 to 18.58 | kfc | 0.01 | |
| | | | |

* All the accuracies indicated in this technical datasheet were stated in laboratory conditions, and can be guaranteed for measurements carried out in the same conditions, or carried out with calibration compensation.

SUPPLIED WITH

- **LX200** housing with silicon photodiode sensor and glass filter correction.
- Transport case
- 3 LR3-AAA batteries
- Calibration certificate
- User manual
- **LLX200** software

OPTIONAL ACCESSORIES

- Extension for remote cell, 5 m length
- Battery module, 5 days autonomy
- AC adapter USB type

METROLOGY

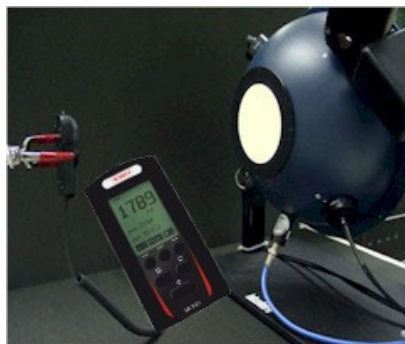
LX200 instrument is calibrated on a specific optical bench. It comes with its calibration certificate. Our standard reference instruments are duly linked to COFRAC.

TECHNICAL FEATURES

| | |
|---|--|
| Measuring range | From 0.0 to 200 000 Lux From 0.00 to 18585 fc |
| Directional sensitivity (f2)¹ | < 6% |
| Linearity (f3)¹ | < 2% |
| Measurement capability* | From 04h30 to 99 days |
| Display | Backlit LCD graphic 128 x 64 |
| Conditions of use (°C/ %RH/m) | From 0 °C to +50 °C. In non-condensation condition. From 0 to 2000 m. |
| Storage temperature | From 0 °C to +50 °C |
| Housing dimensions (without sensor) | 120 x 58 x 34 mm |
| Weight (housing + sensor + battery) | 185 g |
| Mini-USB plug | For USB power supply adapter and data transfer |
| Power supply | 3 batteries 1.5 V type LR3-AAA |
| Autonomy | 72 hours minimum, continuous operation |
| European directives | 2004/108/EC EMC ; 2006/95/EC Low tension ; 2011/65/EU RoHS II ; 2012/19/EU WEEE |

* According to the mode (uniformity, temporal or cartography)

¹ The f2 and f3 coefficient are defined according to the French NF C 42-710 standard.



大華高科股份有限公司

www.taiwah.com.tw info@taiwah.com.tw

台北 TEL: (02) 2592 - 5119 Fax: (02) 2592- 3577

台中 TEL: (04) 2707 - 2269 Fax: (04) 2707- 1799

台南 TEL: (06) 243 - 2338 Fax: (06) 243 - 2339

KIMO® 為 KIMO 儀器公司的註冊商標。

資料中任何商標和圖片為本公司版權所有。未經本公司書面許可不得以何形式複製，轉印，發行或儲存資料中所包含的訊息。本資料如有變更，恕不另行通知。